

**LOCK-N-STITCH Inc.**  
Casting Repair Specialists  
1015 S. Soderquist Rd.  
Turlock CA 95380

800-736-8261  
209 632-2345  
Fax 209-632-1740  
[www.locknstitch.com](http://www.locknstitch.com)

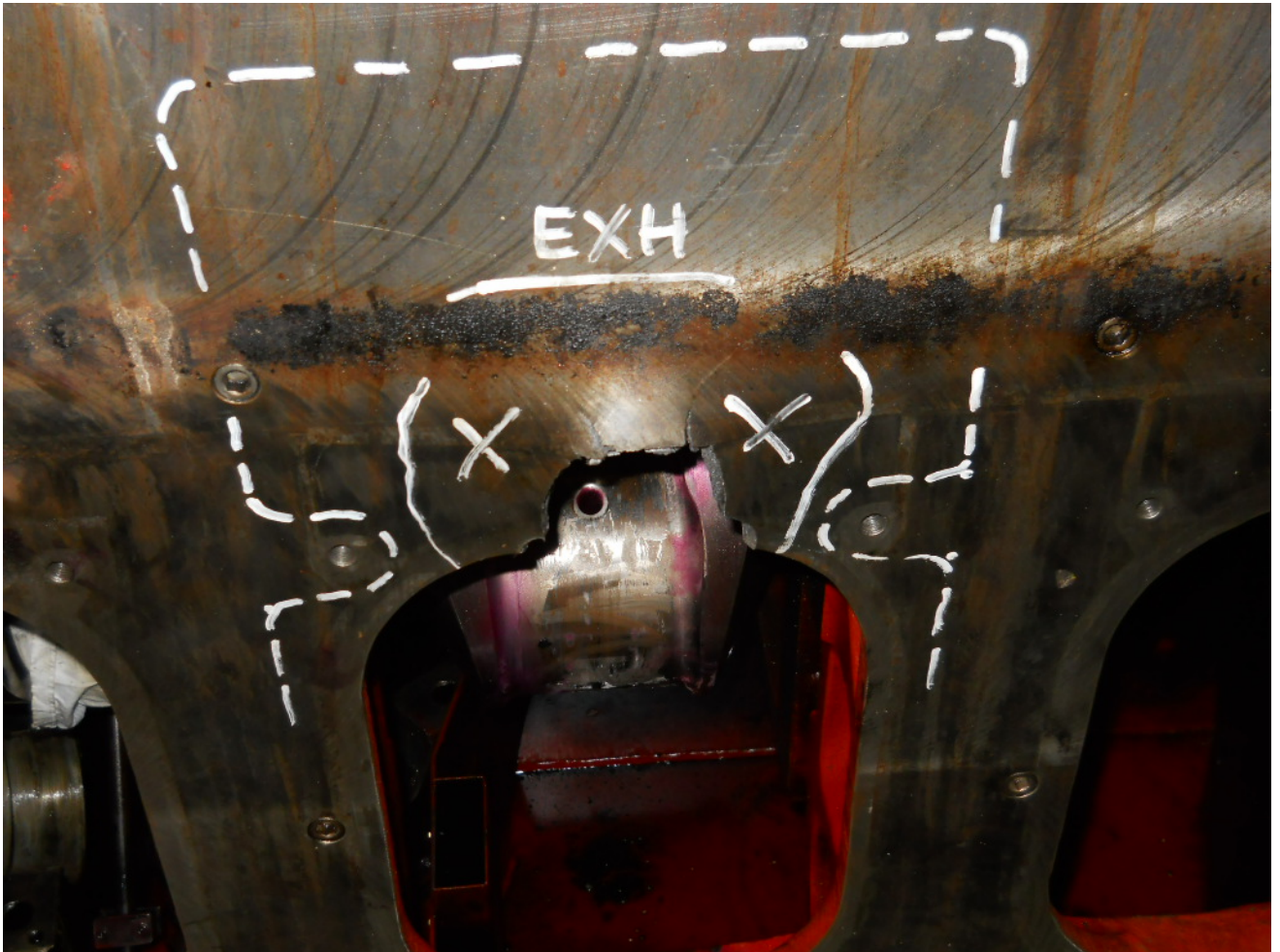
## **Final Report**

Date 12/18/2012

Inspection door exhaust side broken out, measuring 6 x 8 cm.

Required: Cutting out the damage area of cam side and exhaust side and installing new section of casting. Metal stitch with C3 Castmaster stitching pins and installing L20 locks around the joint line of new casting for additional strength.

Exhaust side:



Cam side:



The damaged area has been cut out to accept new casting.

Exhaust side:



Cam side:



New casting fit in place and stitched with C3 Castmaster pins.

Exhaust side:



Cam side:



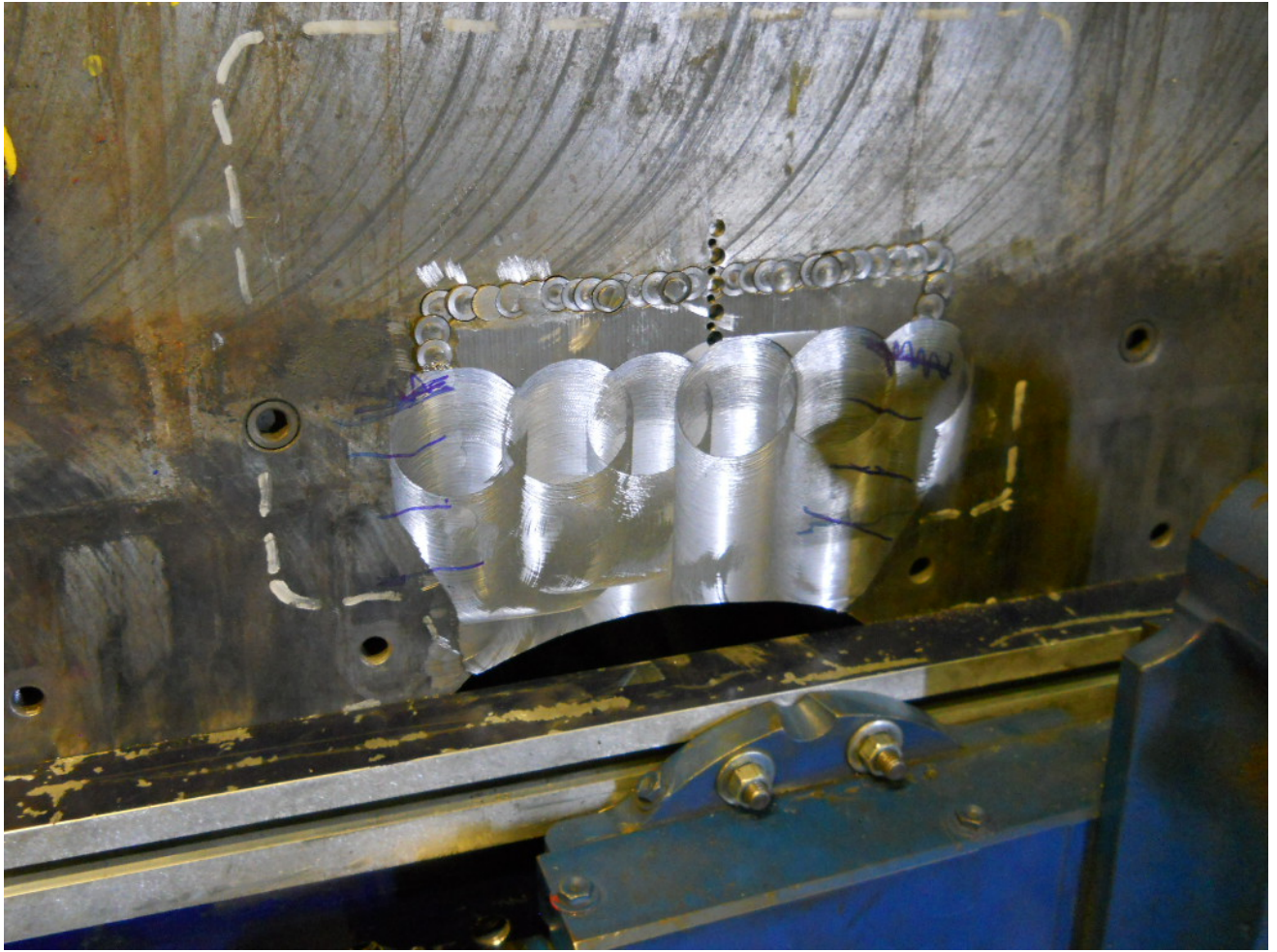
L20 locks installed around the repair for additional strength.





Set up and machine inspection window seal surface at exhaust side and cam box side.

Exhaust side:



Cam side:



Hand finish and completed interior and exterior of the block.

Cam side interior:



Exhaust side interior:



Exterior side of block:



Exterior of block:



Exterior of block:

