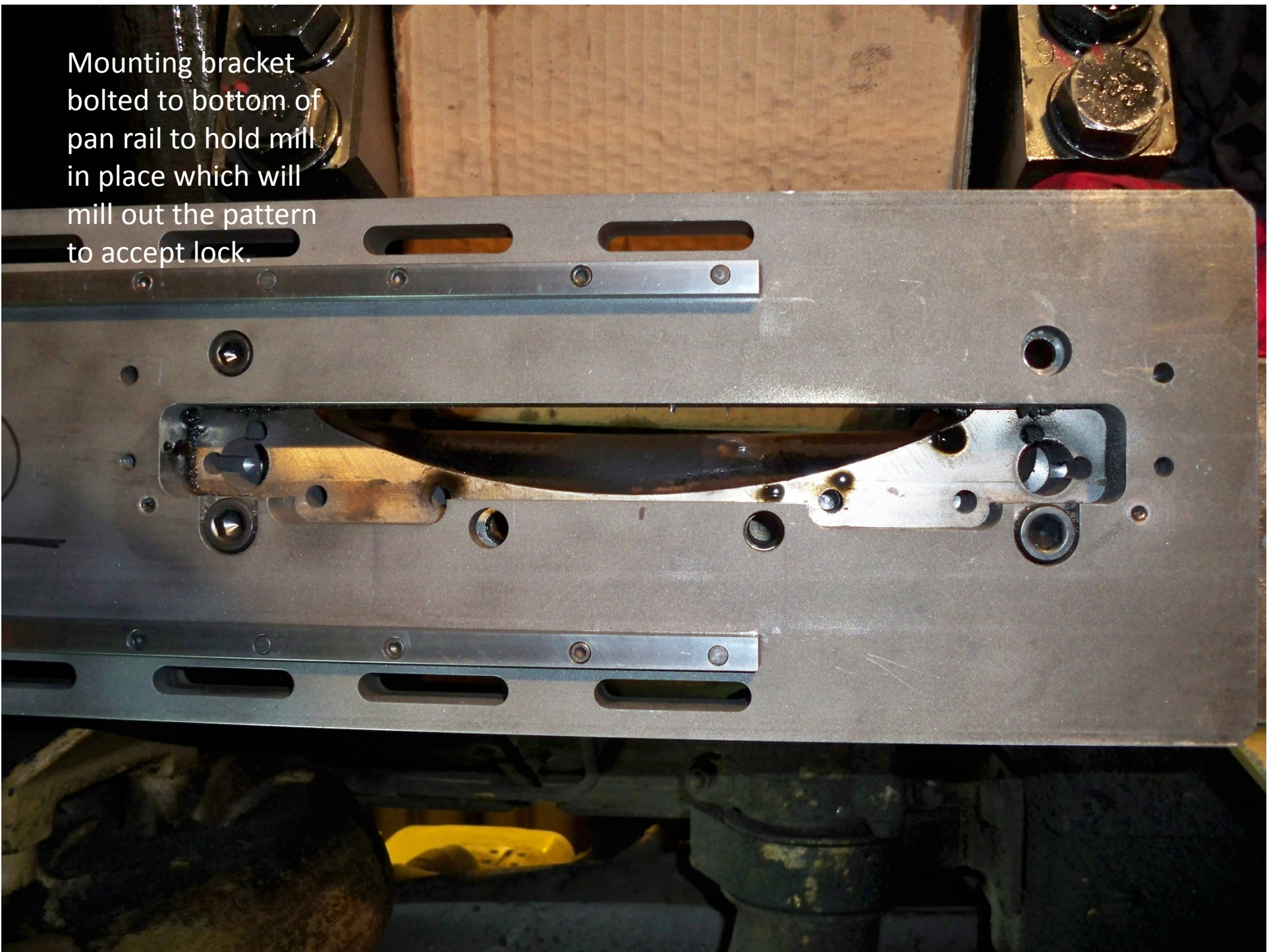






Pan rail reinforcement on CAT 789C using a magnetic base drill and portable mill.

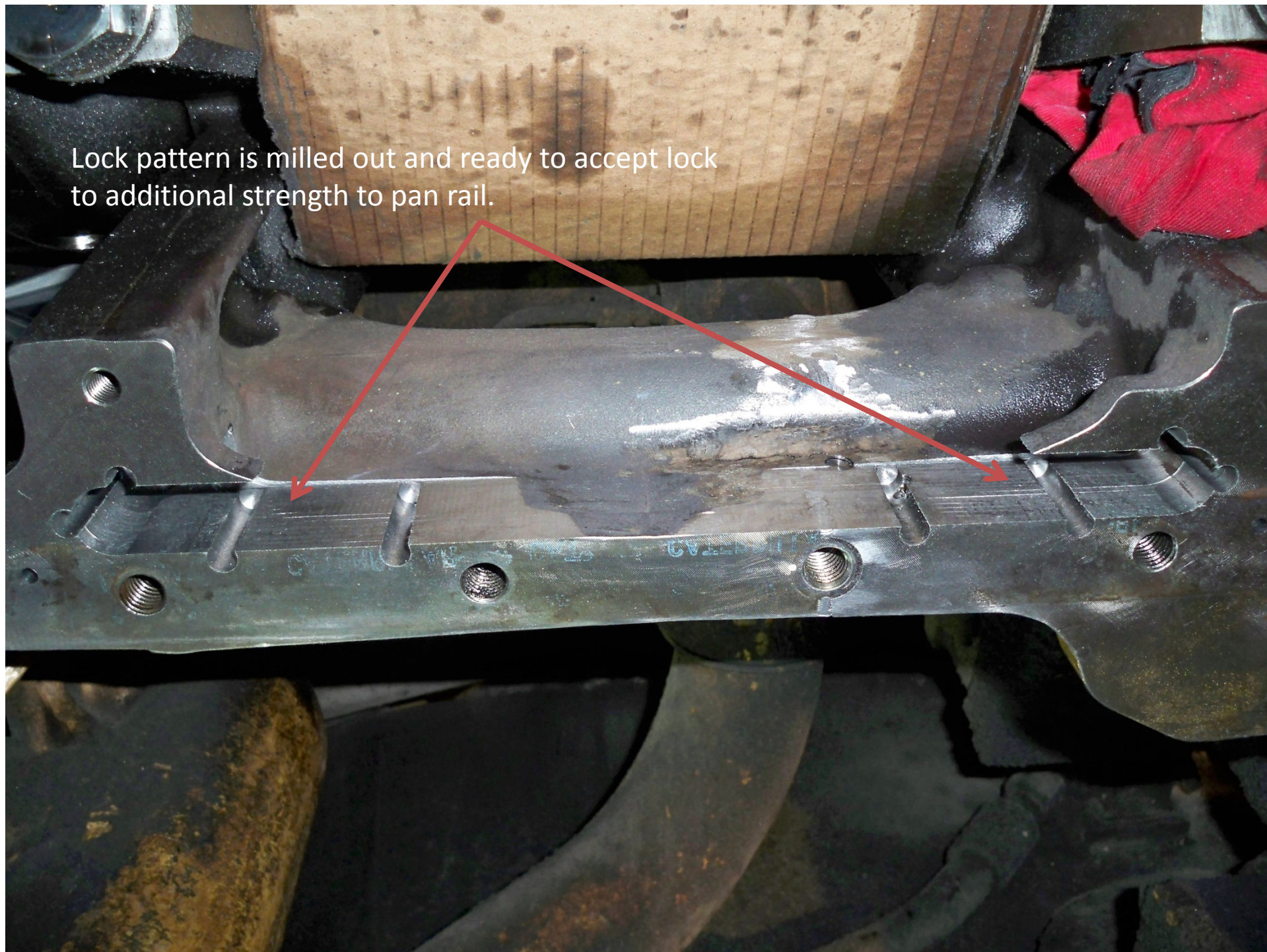
Mounting bracket
bolted to bottom of
pan rail to hold mill
in place which will
mill out the pattern
to accept lock.



Portable Mill mounted upside down to mill out pattern for lock



Lock pattern is milled out and ready to accept lock to additional strength to pan rail.



Lock installed into pan rail and is ready to be assembled.

